

Nautech

HT, SUPERYACHT, TECHNOLOGIES AND DESIGN



besenzoni
LUXURY YACHT SOLUTIONS

GANGWAYS
CRANES
HELM SEATS
LADDERS
HYDRAULIC PLATFORM
TABLE BASES
CARBON LINE
CUSTOM MADE

SAT | METSTRIDE Amsterdam | 13-15 nov | 01565 / 10708

www.besenzoni.it

Encounters
Gianni Cariboni
Technology
and the America's Cup

Market
Interest in yachting
grows
in Colombia

Technology
Superfoils 15,
a motorboat that
can fly on the water


tecniche nuove
www.tecniche nuove.com

Wood+carbon= V40 Weekender

Every yacht has a special place in the heart of its owner. For some a boat means freedom and peace; to others it gives a sense of prestige and luxury. Some love the tradition that only an old wooden yacht can offer, others prefer the performance and lightweight that only hulls in composite can give. The innovative V40 Weekender, made entirely from cedarwood in carbon, tries to please everybody.

The new V40 Weekender was presented in the recent autumn shows and aroused great interest not just from yachtsmen attracted by technological, high-performance boats, but also by lovers of traditional wooden construction. The V40 Weekender was in fact created from a combination of the yacht material par excellence, wood, and the best performing, carbon. This yacht also marks the first collaboration between the design studio of Vismara Marine, the well-known Viareggio full custom sailing and motor yacht yard, and the historic Alto Adriatico 1977 yard in Monfalcone, specialising for more than 40 years in the construc-

tion and refitting up wooden boats. With the V40 Weekender, Alto Adriatico is again making the most of the historical build technique: build made almost entirely in red cedarwood, alongside carbon and sandwich to make it lighter and more modern, as has been the case for many years in projects by Vismara.

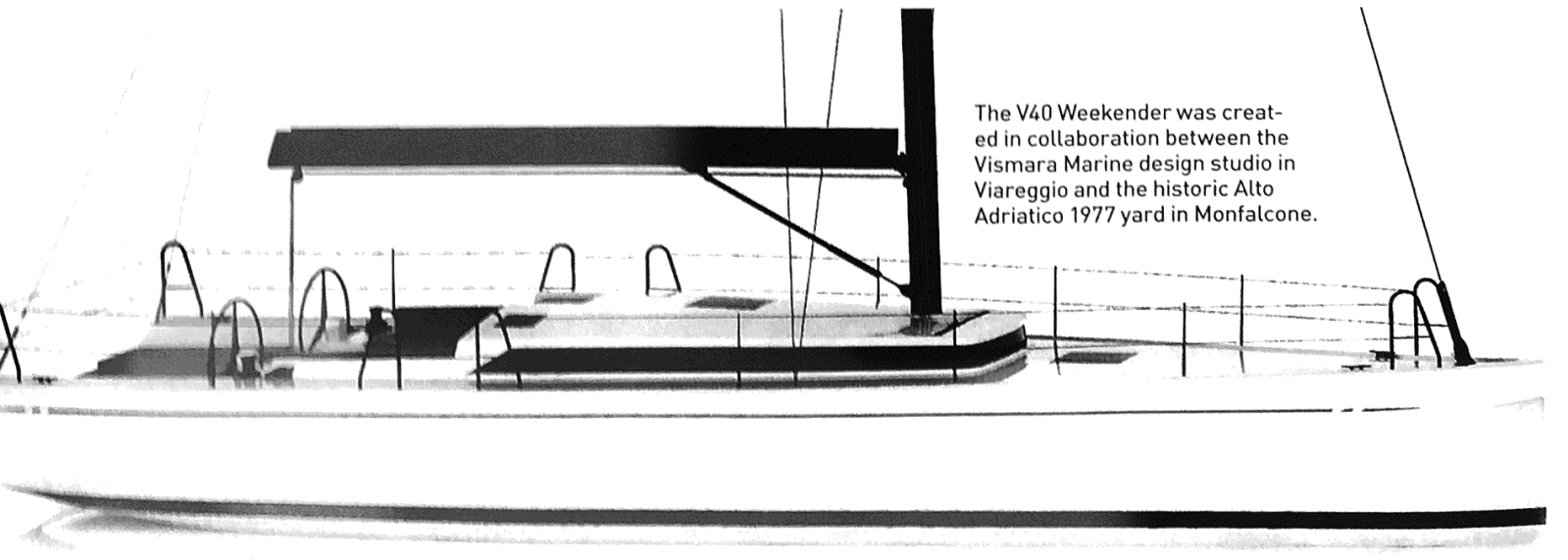
The build techniques used by Alto Adriatico give the yacht strength and sporting and elegant looks, offering at the same time plenty of interior space for cabins and storage, though it is only a 40 footer.

A lightweight yacht, 12.2 m overall and 3.6 in the beam, optimised for winds from 8 to 14 kn, very fast and stable thanks to a fixed keel drawing 2.55 m. The engine, decidedly superior to those of yachts of a similar length, is a 2.2 L Volvo Penta D2-50 diesel with four cyl-

inders in line and natural aspiration, with an in-line cam injection pump and freshwater cooling. Thanks to low rpm, the engine is quiet and produces minimal vibration.

Deck layout

As with almost all Vismara designed yachts, the deck is extremely uncluttered to permit exploitation of all space for guests and their comfort. There are flush hatches, the anchor winch with its warping head is recessed below decks and the lines run in channels below the deckhouse, but can be inspected for maximum safety and ease of maintenance. Halyards and sheets all arrive in the cockpit, directly on Harken "Rewind" series electric winches, which make it possible to trim and ease the sheets using a battery of four



The V40 Weekender was created in collaboration between the Vismara Marine design studio in Viareggio and the historic Alto Adriatico 1977 yard in Monfalcone.

backlit controls on each side to permit easy sail trimming on all points of sailing. Astern there is a generously sized sunbed with large and elegant cushions, below which are several hatches leading to storage lockers, technical spaces and the life raft. Finally, on the transom is a small bathing platform with a handy ladder to facilitate entering and, above all, leaving the water. When not in use it can be stored in the sail locker forward. In technical terms the mast, entirely in carbon, rests on the deck to give more room in the interior; the boom, also in carbon, includes a roller reef system, while the jib is self-tacking, in line with the easy sailing philosophy Vismara Marine has always adopted.

At the bow is a dolphin striker in carbon where a code 0 can be mounted; the twin helm in carbon guarantees maximum manoeuvrability even in difficult conditions. With its technical and handling equipment, the V40 Weekender is clearly designed for single- or short-handed crews, without renouncing performance and safety. The keel in lead is lightened in its upper part to maximise righting moment and the sailplan is generous, but still "easy sailing": the mainsail is 50 m², and can be rolled onto the boom with a manual manoeuvre handled directly from the cockpit, and the self tacking jib measures 31 m². The code 0, for downwind sailing, can also be rolled.

The interiors

The yacht is designed for outings lasting a few days and can carry up to 6 people in comfort thanks also to two heads and a roomy dinette that makes the living area comfortable and spacious.

Bulkheads and furnishings are in wood, only some of it painted to create a contrast of light and delicate tones: the wood gives off a strong and surprising scent of cedar that permeates all the environments. The layout has a large dinette with two L-shaped divans along the sides and a table that folds out to allow four people to dine in comfort. The saloon is very well lit, thanks to a strip window running all round the deckhouse that gives an open view of the sea. On the starboard side is a galley with a fridge, oven and gimbal mounted gas burners, and the top becomes per-



The yacht in an early stage of fitting out: construction is almost entirely in red cedarwood, with cladding in carbon and sandwich to make it lighter and more modern.



The strips of cedarwood in the interior give off a surprising perfume.

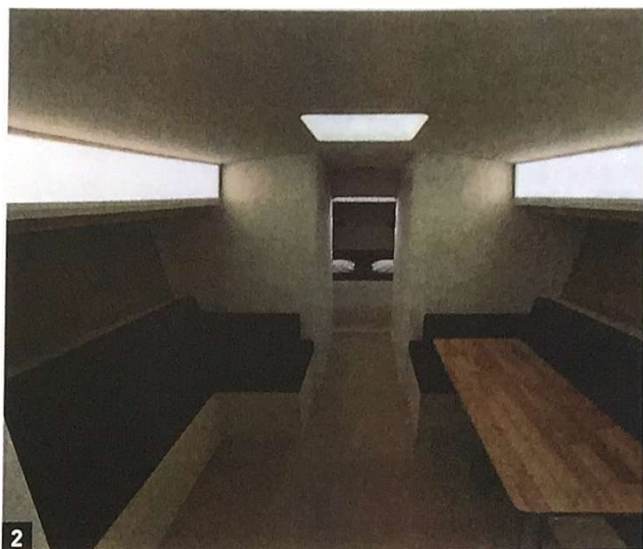
The Alto Adriatico yard

Founded in 1977, the Alto Adriatico yard made its mark right from the start in developing wooden yachts and creating custom interiors. Since then the staff has maintained the same manufacturing tradition with new sailing yachts, classical and sporting, built in wood. Over the years the Alto Adriatico yard has made its mark for its original construction method, making modern yachts with ancient charm. The success of the yachts built by the yard is also the result of sapient collaboration with great architects and designers including Carlo Sciarrelli, Alessandro Vismara, Nuvolari & Lenard, Alessandro Vallicelli, German Frers, Maurizio Cossutti, Marco Lostuzzi, Franco Giorgetti and Giovanni Ceccarelli.



A historical view of the Alto Adriatico yard, founded in 1977 in Monfalcone and specialising in building and refitting wooden yachts.

TECHNOLOGY



1 Bulkheads and furnishings of the V40 Weekender are in wood, only some of it painted to create a contrast of light and delicate tones.

2 The layout has a large dinette with two L-shaped divans along the sides and a table that folds out to allow four people to dine in comfort.

3 The galley has a fridge, oven and gimbal mounted gas burners, and the top becomes perfectly flat thanks to covers for the wash basin and burners that make the working space as large as possible.

4 The master cabin, accessible through to sliding doors, with a double wardrobe on the sides and drawers and spacious lockers under the bunk.

fectly flat thanks to covers for the wash basin and burners that makes the working space as large as possible. Astern, beyond the galley, is a large technical compartment accessible from the cockpit that also houses the diesel tank.

On the opposite side is a double cabin with wardrobe. Moving forward along the corridor, to port is the guest bathroom and to starboard the master bathroom, plumbing and bathroom accessories are by Elka and were chosen to match perfectly the curved shapes of the handles and accessories in the various parts of the yacht. Right at the bow is the master cabin, accessible through to sliding doors, with a double wardrobe on the sides and drawers and spacious lockers under the bunk. All lights on board are LED and most sockets are USB for recharging various devices.

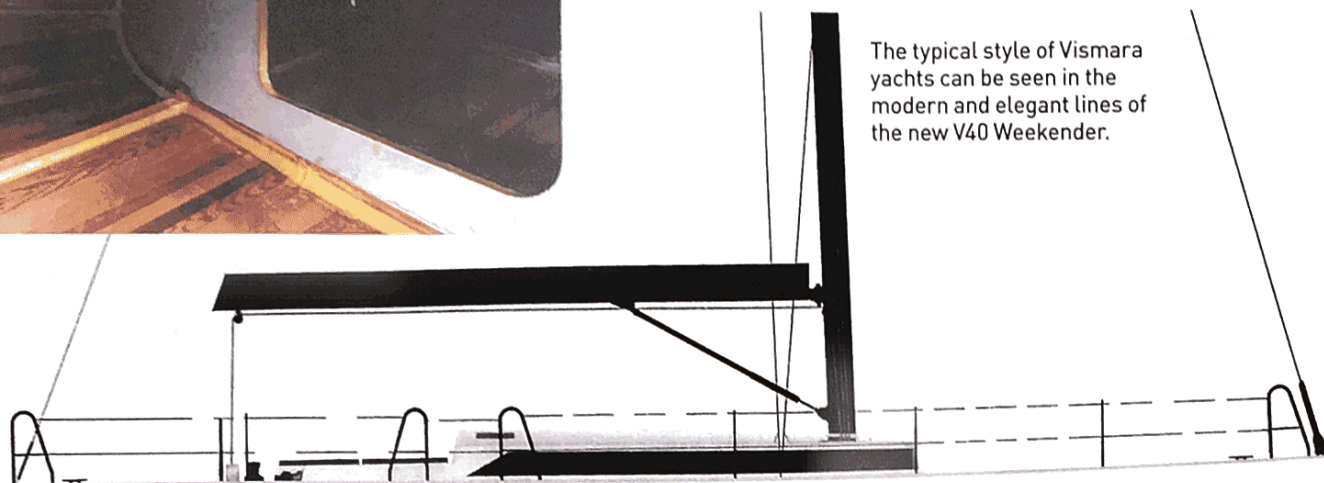
Vismara Marine

Vismara Marine is an excellent yard specializing in building custom sailing yachts, founded in 1984 by Alessandro Vismara and based in Viareggio, the home of Italian boatbuilding. The company has always been recognised as being in the forefront of custom sailing yacht building to satisfy the desires of the most experienced and demanding owners. The Vismara style is based on the ability to integrate design, traditional and modern materials to produce yachts that are easy to handle and with high performance. The company structure is based on the dedication and passion of its craftsmen: these characteristics are shared by the master carpenter of the Alto Adriatico 1977 yard and the designer of Vismara Marine, and so the relationship between the two companies, geographically distant though they are, was strong enough to give life to such a pearl as the V40 Weekender.

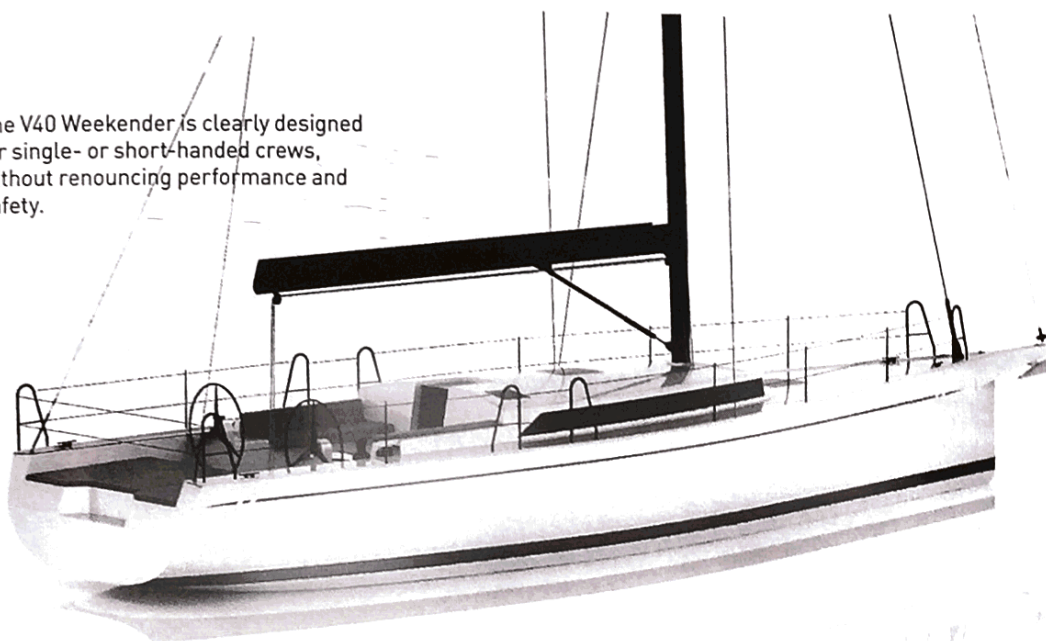


Detail of the anchor locker, where the cedarwood strips narrow to form the slightly inverted V of the bow.

The typical style of Vismara yachts can be seen in the modern and elegant lines of the new V40 Weekender.



The V40 Weekender is clearly designed for single- or short-handed crews, without renouncing performance and safety.



THE BUILD TECHNIQUES USED BY ALTO ADRIATICO GIVE THE YACHT STRENGTH AND SPORTING AND ELEGANT LOOKS, OFFERING AT THE SAME TIME PLENTY OF INTERIOR SPACE FOR CABINS AND STORAGE.

Alto Adriatico 1977

The Alto Adriatico yard has grown over the years, thanks to great experience and prestige results, uniting different professional abilities that work with competence to satisfy the requirements of owners who want to possess a boat that is unique and customised. Alto Adriatico technicians worked with the Vismara Marine designers in perfect harmony to study the best solutions for building a

yacht that offered maximum comfort on the water, great safety and extremely long life. Vismara Marine has always aimed for continual innovation, an objective that Alto Adriatico accepted and shared with the philosophy that was more traditional but no different because of this. The V40 Weekender was built entirely in wood in carbon, not only to make it as light as possible (gross tonnage is about 5500 kg), but to show how fast and comfort-

able such a yacht could be with exterior and interior design that makes every model built special. The role of Alto Adriatico was not limited to development of the project and building of the yacht, but included full and continuous support for the customer, from the choice of materials for the interiors through to technical and distribution solutions to ensure that every model satisfied the desires of its owner.